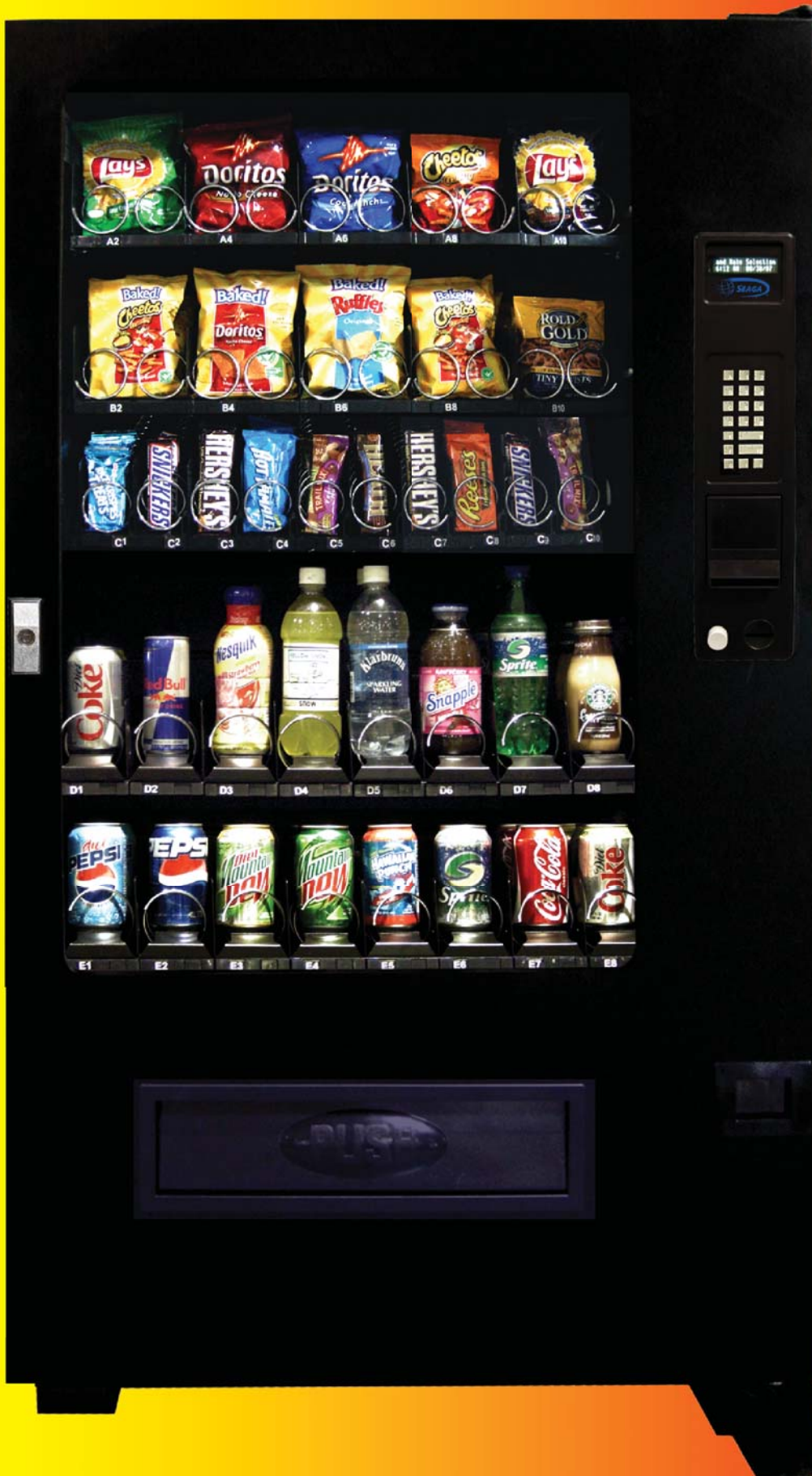




# VISTA

*VC5600 Refrigerated Combo*



# VISTA

V  
C  
5  
6  
0  
0

## High Definition Vending

So brilliant, so efficient and so exclusive - LED lighting is standard only in *The Premium Collection!* Highlight your product to it's best advantage and sell up to 12% more!



Save time and money - the greenest technology in vending! LED lighting lasts up to 50,000 hours. That means less waste in the environment and less power consumption at the location.

## Productivity

Change all your pricing, on all your machines, from your PC!



Sound good? *The Premium Collection* can make it happen with the **Seaga Smart Card** and **Seaga Smartware** software. Change prices, settings, deals and more and give your route driver the card - instant download!

Works the opposite, too - diagnose and troubleshoot right from the card!

## Guaranteed Vend

- Improve Reliability
- Re-credits or refunds
- Consistent home position
- Sensor self-calibration
- Reduces service calls
- No give-away products
- Keeps track of vends



## Health Conscious

Today's healthy lifestyles are creating a demand for healthy vended items, too. Keep your customers safe and give them the selection they want. Vend milk, yogurt and dairy products without concern. The Vista Series has complete health and safety control for perishable products.



## Increase Sales

80% of employees say that they consider on-site offerings of snacks and beverages a benefit to them. Encourage their purchases by using the Jackpot settings on *The Premium Collection!* Meal deal settings are also available.

## Snack and Beverage Vendor

**Height:** 72" (183 cm)  
**Width:** 39" (99 cm)  
**Depth:** 37" (93 cm)  
**Weight:** 721 lbs. (327 kg)  
**Electrical:** 115 VAC or 220 VAC  
**Selections:** Maximum: 46  
Standard: 36

**Standard Capacity\*:** 375  
Chip: 110  
Candy: 169  
Beverage: 96

**Pricing:** Individual from \$0 to \$999.95

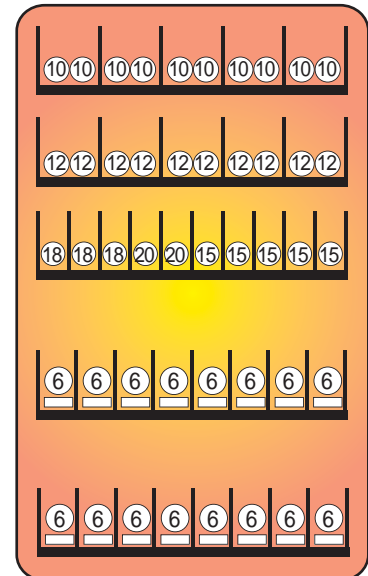
**Coils:** Dual coils standard

**Interface:** DEX and MDB  
**Seaga Smart Card**  
PC with **Seaga Smartware**

**Lighting:** Energy efficient LED lighting system

**Customer Display:** 20 character, 2-line programmable

\* Standard Coil Configuration



NAMA LISTED

RoHS COMPLIANT



700 Seaga Drive,  
Freeport IL 61032  
call: 815.297.9500  
email: [info@seagamfg.com](mailto:info@seagamfg.com)  
visit: [seagamfg.com](http://seagamfg.com)

Indoor installation only.  
Specifications are subject to change without notice.